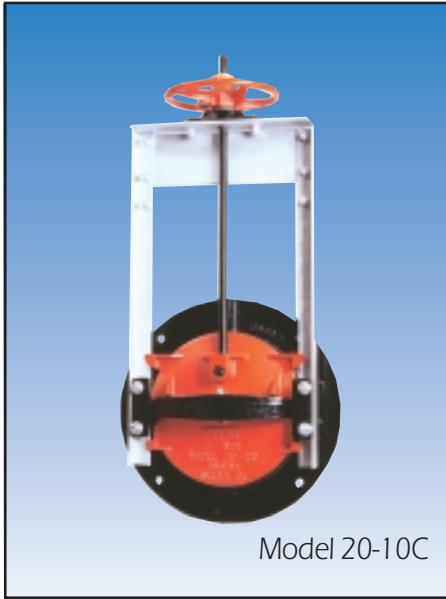


SERIES 6400 MODEL 20-10C SLIDE GATE

TECHNICAL DATA SHEET



Model 20-10C

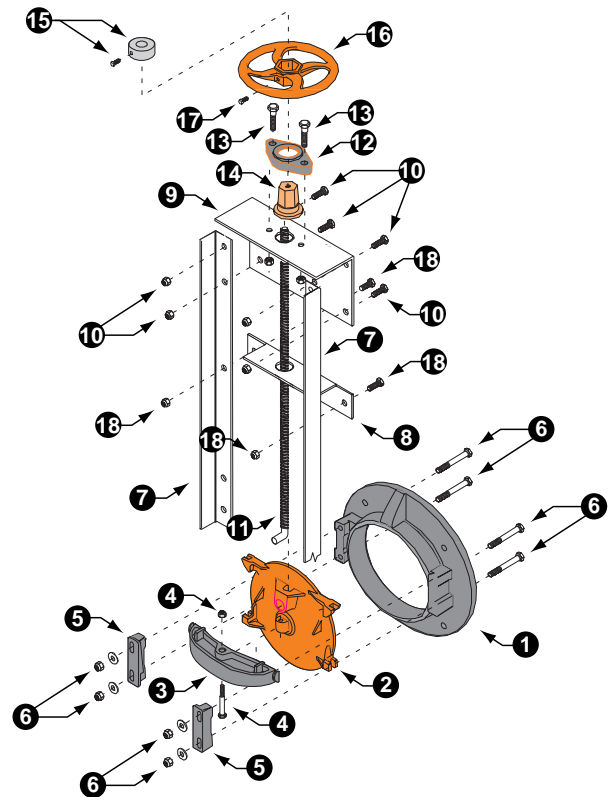
Series 6400 Slide Gate

Features

- Unique cross bar design provides uniform wedging action around seating surface.
- Roll threaded rising stem ensures ease of operation and extended stem life.
- Rugged Cast Iron seat and cover.
- Available for mounting to headwalls or corrugated pipe.
- Precision machined seating surfaces.
- Rated for up to 20 ft. seating head and 10 ft. unseating head.

Material Specifications

Item	Description	Material	Specification
1	Seat	Cast Iron	ASTM A126, Class B
2	Slide	Cast Iron	ASTM A126, Class B
3	Cross Bar	Cast Iron	ASTM A126, Class B
4	Cross Bar Bolt & Nut	Steel, Plated	ASTM A307, A164
5	Wedge	Cast Iron	ASTM A126, Class B
6	Wedge Fasteners	Steel, Plated	ASTM A307, A164
7	Side Angle	Steel, Galvanized	ASTM A36
8	Stem Support	Steel, Galvanized	ASTM A36
9	Head Bar	Steel, Galvanized	ASTM A36
10	Head Bar Fasteners	Steel, Plated	ASTM A307, A164
11	Stem	Steel	ASTM A108, Grade 1045
12	Keeper	Cast Iron	ASTM A126, Class B
13	Keeper Bolts & Nuts	Steel, Plated	ASTM A307, A164
14	Lift Nut	Brass	ASTM B584, Alloy 844
15	Stop Nut	Brass	ASTM B16
16	Handwheel	Cast Iron	ASTM A126, Class B
17	Handwheel Set Screw	Steel, Plated	ASTM A307, A164
18	Stem Supt., Bolts/Nuts	Steel, Plated	ASTM A307, A164

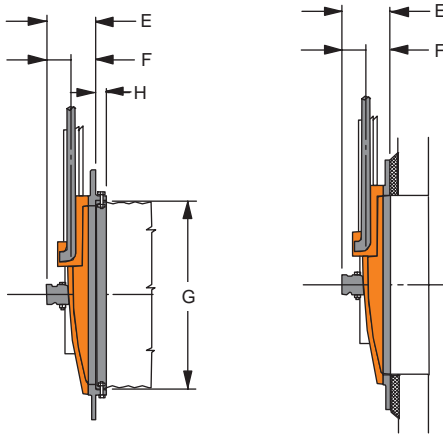
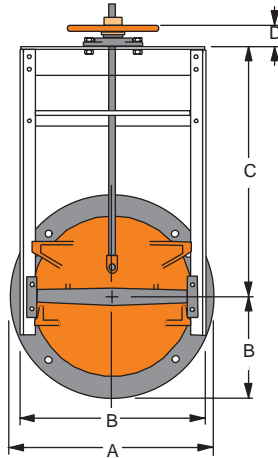


Applications

The Series 6400 Slide Gate is designed for use in water control systems, reservoirs, drainage systems, dams, soil conservation projects and flood control systems. The unique design of the Model 20-10C makes it ideal for controlling flow through round openings with heads up to 20 ft. on the front side and up to 10 ft. on the back side.

SPECIFICATIONS

SERIES 6400 MODEL 20-10C SLIDE GATE



Model 64A
(Spigot Back Frame)

Model 64A
(Flat Back Frame)

Pressure Rating

Gate Size	Seating	Unseating
8 - 12"	35'	10'
14 - 18"	32'	10'
20 - 24"	26'	10'
30 - 42"	20'	10'

Installation

The Series 6400 Slide Gate is normally installed on corrugated steel pipe or bolted to a concrete head wall or steel flange. When attached to corrugated steel pipe, the spigot back style seat is used. This style seat allows for a simple bolted connection to the pipe or the use of a rod and lug harness assembly to mount the gate to the pipe. In either case, a mastic is used to seal the joint. When mounted to a concrete headwall the flat back style seat is used in conjunction with embedded anchor bolts to locate, align and support the gate. A 1" space between the seat and concrete is grouted after the gate has been mounted on the anchor bolts. The flat back style seat can also be machined and drilled to match a partial pattern of a standard 25 lb. or 125 lb. flange.

Options

- Frame angles - painted, Galvanized or Stainless Steel
- Cast Iron or Bronze seating faces
- Stainless Steel stems and fasteners
- Flatback for headwall or flange mounting
- Spigot back for mounting to corrugated pipe
- Rising and non-projecting stems

Dimensional Information

Gate Size (Inches)	Dimensions (Inches)								Anchor Bolt Data		Lift Data		
	A	B	C	D	E	F	G	H	Qty.	Size	Lift Type	H/wheel Dia.	Stem Dia.
8	13.50	11.38	18.00	2.88	6.19	3.00	8.75	1.50	4.0	1/2 x 12	H1	10.0	7/8
10	16.00	13.38	21.00	2.88	6.44	3.00	10.75	1.50	4.0	1/2 x 12	H1	10.0	7/8
12	19.00	15.38	24.00	2.88	6.63	3.00	13.25	1.50	4.0	1/2 x 12	H1	10.0	7/8
14	21.00	17.38	27.00	2.88	6.88	3.31	15.25	1.50	4.0	1/2 x 12	H1	10.0	7/8
15	22.00	18.38	28.50	2.88	7.69	3.31	16.25	1.50	4.0	1/2 x 12	H1	10.0	7/8
16	23.50	19.38	30.00	2.88	7.94	3.31	17.25	1.50	4.0	1/2 x 12	H1	10.0	7/8
18	25.00	22.88	33.25	2.88	9.00	4.19	19.25	1.50	4.0	5/8 x 12	H1	14.0	1-1/8
20	27.50	24.88	36.25	2.88	9.31	4.19	21.25	1.50	4.0	5/8 x 12	H1	14.0	1-1/8
21	28.50	25.88	37.75	2.88	9.56	4.19	22.25	1.50	4.0	5/8 x 12	H1	14.0	1-1/8
24	32.00	28.88	42.25	2.88	10.94	4.19	25.25	1.50	4.0	5/8 x 12	H1	14.0	1-1/8
30	38.75	35.88	51.50	3.50	12.25	4.75	33.25	2.00	6.0	3/4 x 12	H2	18.0	1-1/2
36	46.00	41.88	60.50	3.50	13.88	5.00	37.25	2.00	6.0	3/4 x 12	H2	24.0	1-1/2
42	53.00	47.88	69.50	3.50	14.50	5.38	43.38	2.00	6.0	3/4 x 12	H2	30.0	1-1/2



Fresno Valves & Castings, Inc.

7736 East Springfield Avenue
P.O. Box 40, Selma, CA 93662, U.S.A.

(800) 333-1658

www.fresnovalves.com